

Welcome to ABC ROES

Welcome to Getting Started with the ABC ROES Software. Follow the steps in this Getting Started Guide to get up and running with the software so that you can quickly complete your first order.

Before you work through this Guide, make sure that you:

- Have digital images or images scanned from film available to create an order.
- Have your ABC Professional User ID and Password available.
- Have your computer connected to the Internet.
- Have ABC ROES Software open so that you can easily complete each step described below.

PC System Requirements:

- CPU: PENTIUM 4 or CELERON at 600 MHZ minimum, 2.0 GHz recommended
- Memory: 128MB minimum, 512MB recommended
- Hard Drive: 1GB free disk space (does not include image storage space)
- Display Resolution: 1024x768 (24-bit color)
- Internet Connection: 56KB v.90 modem or broadband
- Operating System: MICROSOFT Windows 2000 Professional, MICROSOFT Windows XP Home, or MICROSOFT Windows XP Professional
- Browser: Internet Explorer v6.0 or greater; Netscape 7.0 or greater
- Java Runtime Environment (JRE) from SUN MICROSYSTEMS, Inc., www.java.com

MACINTOSH System Requirements:

- CPU: POWER MAC 300 MHZ G3 minimum, MAC G4 1GHz recommended
- Memory: 128MB minimum, 512MB recommended
- Hard Drive: 1GB free disk space (does not include image storage space)
- Display Resolution: 1024x768 (24-bit color)
- Internet Connection: 56KB v.90 modem or broadband
- Operating System: MAC OS X 10.2.6 minimum, MAC OS X 10.3 recommended
- Browser: Internet Explorer v5.2 or greater; Netscape 7.0 or greater
- Java Runtime Environment (JRE) from SUN MICROSYSTEMS, Inc., www.java.com

Step 1 - Install ABC ROES

The first step is to download the software from the ABC Photocolour website at:
www.abcphoto.com/professional/roesinstall.jsp

1. Click on ABC ROES Installer under file download.

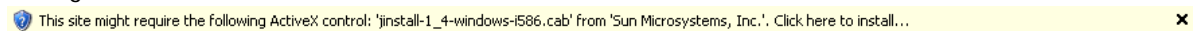


2. The ABC ROES Installer page will check to see if Java Runtime Environment is installed on your system.
 - If JRE is not installed on your system the ABC ROES Installer page will automatically download and install JRE followed by the installation of ABC ROES.
 - If JRE is installed on your system, the ABC ROES Installer page will automatically install ABC ROES.

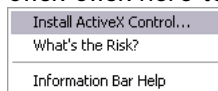
For MICROSOFT Windows XP Service Pack 2 users, a security warning dialog will be displayed. Click OK.



Along the top of your browser, a security warning indicating that the site requires ActiveX control to begin the installation of the Java Runtime Environment.



Click [Click here to install...](#) and select **Install ActiveX Control...**



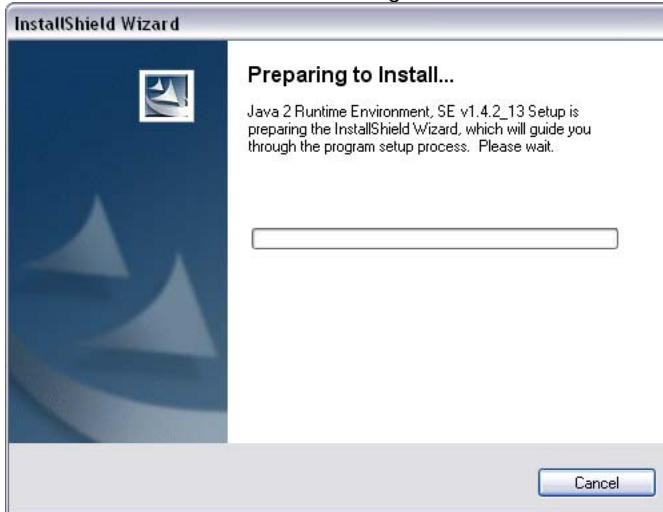
- An "Internet Explorer - Security Warning" dialog box will be displayed. Click Install.



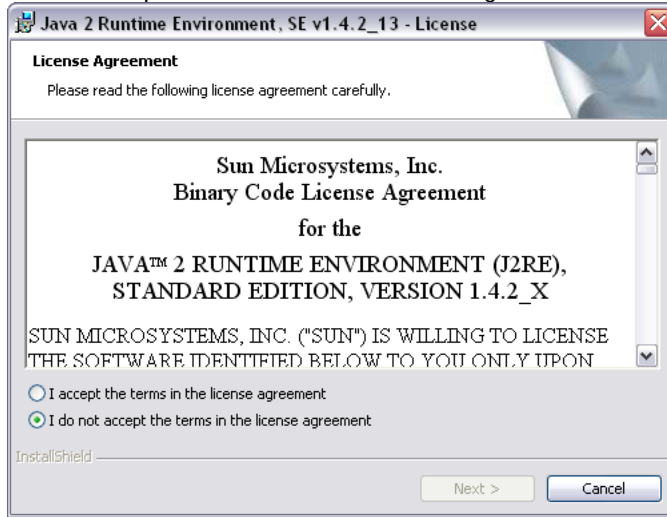
- The "Java™ Installer" dialog will be displayed indicating the install progress.



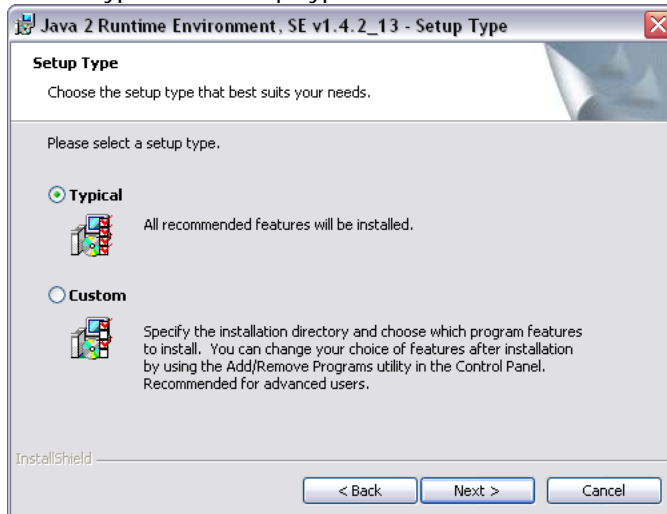
- The "InstallShield Wizard" dialog box for the Java Runtime Environment will be displayed.



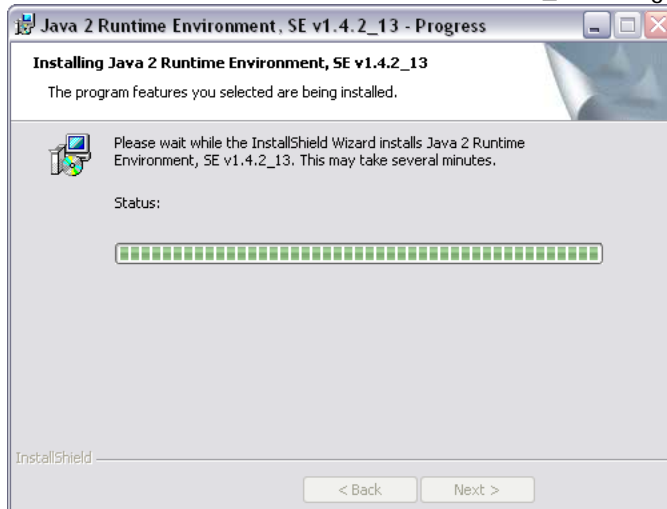
- The "Java 2 Runtime Environment, SE v1.4.2_13 - License" dialog box will be displayed. Click I accept the terms in the license agreement.



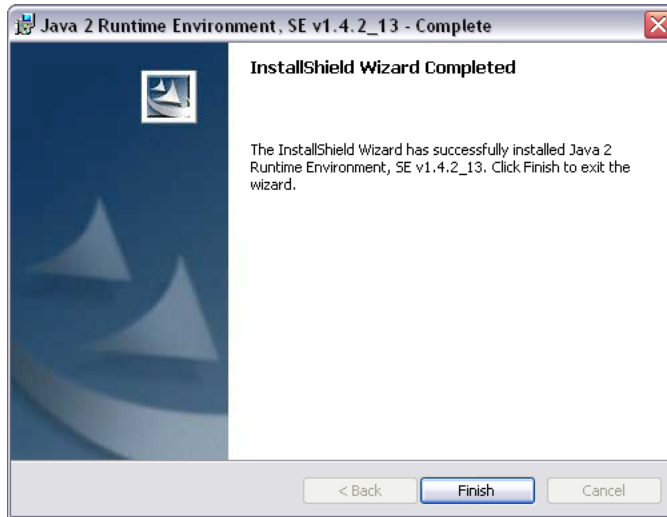
- The "Java 2 Runtime Environment, SE v1.4.2_13 - Setup Type" dialog box will be displayed. Select Typical for setup type. Click Next >.



The "Java 2 Runtime Environment, SE v1.4.2_13 - Progress" dialog box will be displayed.



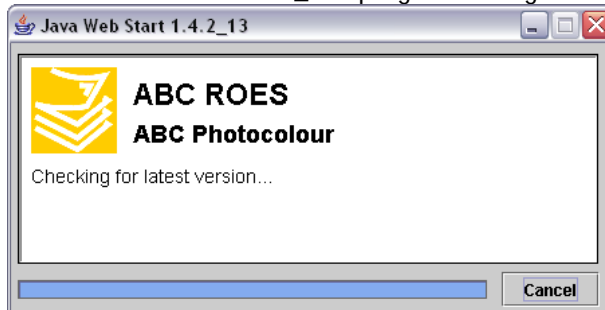
- The "Java 2 Runtime Environment, SE v1.4.2_13 - Complete" dialog box will be displayed. Click Finish.



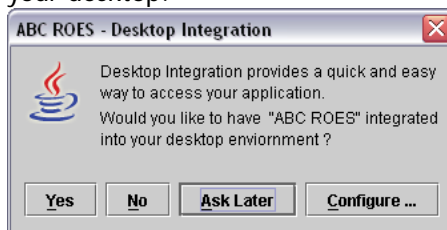
- A Security Warning for SoftWorks Systems, Inc. will be displayed. Click Start.



- A "Java Web Start 1.4.2_13" progress dialog will be displayed.



- An "ABC ROES - Desktop Integration" dialog will be displayed. Click Yes to have an icon created on your desktop.



- Installation for ABC ROES is complete.

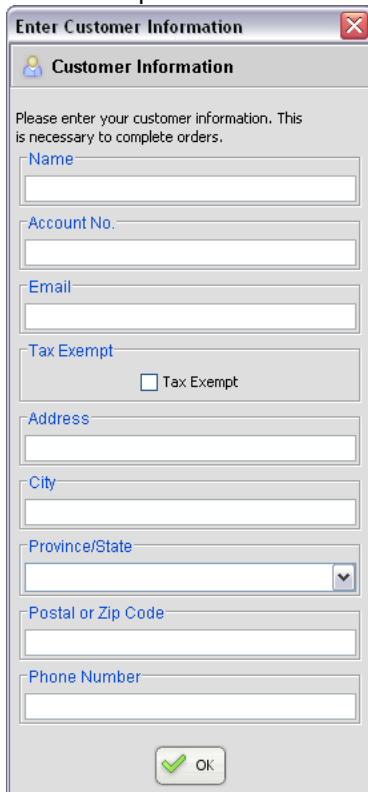
Step 2 - Register Your Studio

Note: If you registered during the software installation process, you should skip to Step 2 - Placing an Order. Before you can submit an order, you need to specify your studio information. Use the Studio Info dialog box that appears when you start the software to specify this information:

1. Launch ABC ROES by double clicking the ABC ROES icon on your desktop.



2. The "Enter Customer Information" dialog will automatically be displayed when ABC ROES is opened if you have not previously provided this information.
3. Enter you the provided ABC ROES Account Number, and your studio's information in the remaining text boxes. For previous Kodak ProShots System account holders, your account number remains unchanged.



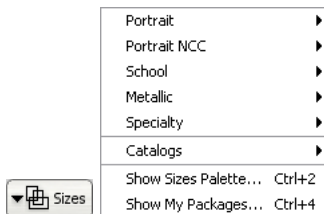
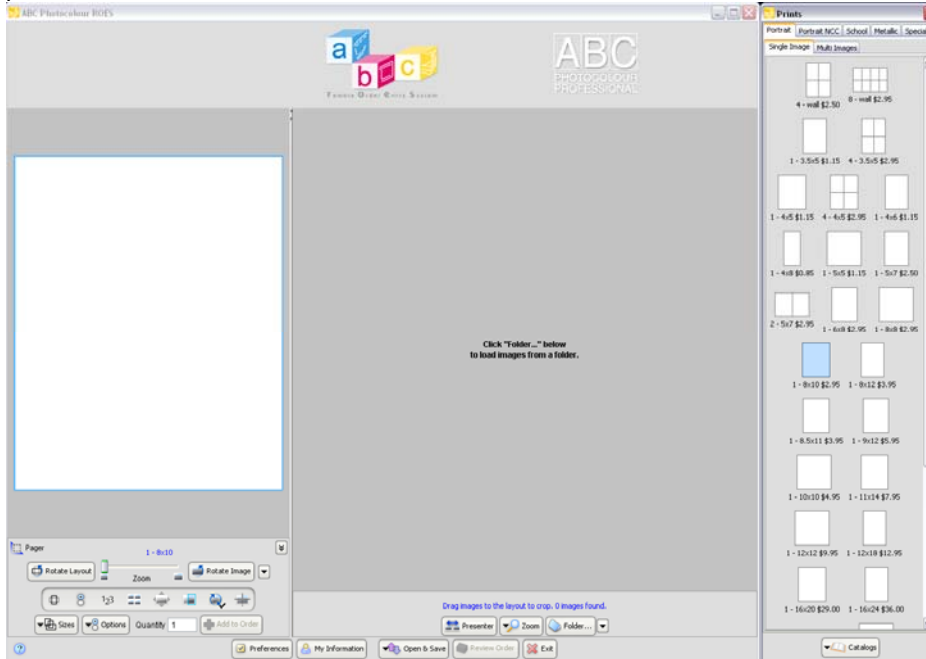
The screenshot shows a dialog box titled "Enter Customer Information" with a close button (X) in the top right corner. Below the title bar is a section labeled "Customer Information" with a person icon. The main text reads: "Please enter your customer information. This is necessary to complete orders." The form contains several input fields: "Name", "Account No.", "Email", "Address", "City", "Postal or Zip Code", and "Phone Number". There is also a "Tax Exempt" section with a checkbox labeled "Tax Exempt". At the bottom of the dialog is an "OK" button with a green checkmark icon.

Click the "OK" button.

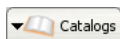
Step 3 - Placing an Order

The next step is to find the images you will use to create your order.

1. The ABC ROES main window has a preview of the product selected on the left pane indicating the cropping of the image and a thumbnail preview of the contents of the folder selected in the center pane.



If the Prints palette is not available when ABC ROES is launched, Click the Sizes button to bring up the Sizes palette and select Show Sizes Palette (or Ctrl+2).



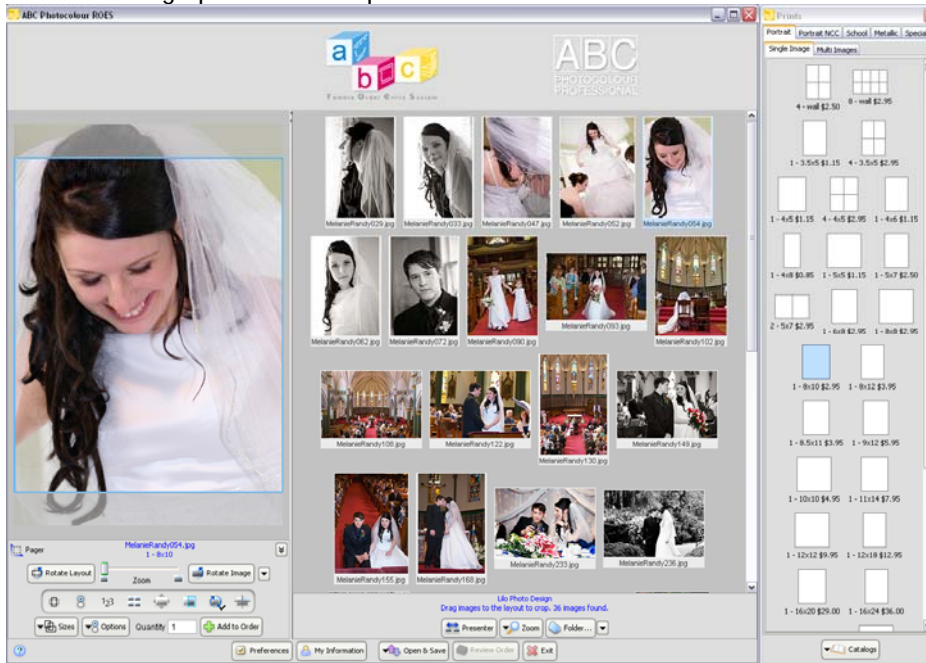
Select either the Prints Catalog or Proof Catalog from the Catalogs button.

Note: Prints and proof orders cannot be mixed.

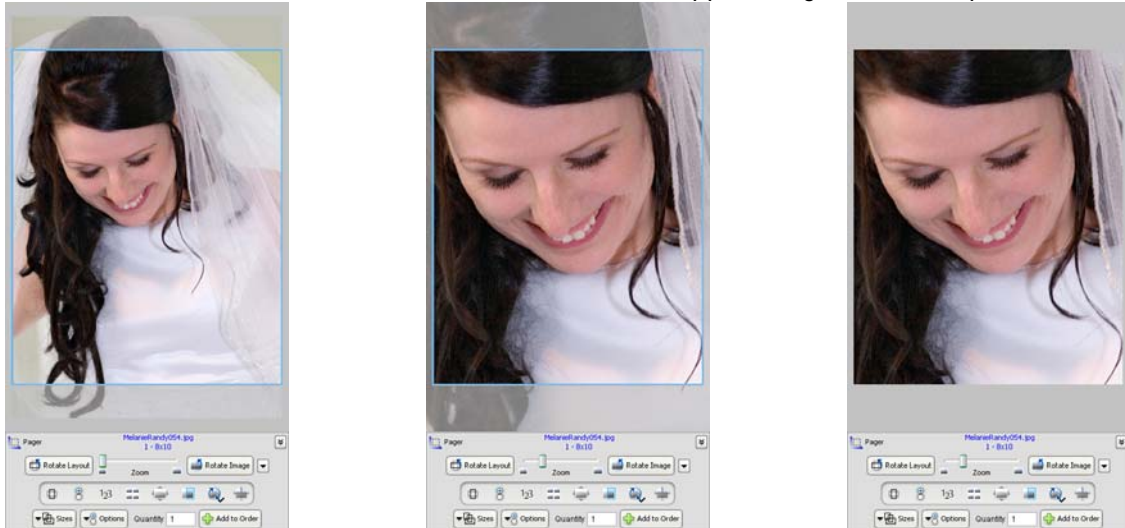
2. 

Click Folder to load images from a folder into ABC ROES. Browse to the folder containing the images for ordering. Click Open. The images from the folder will be loaded into the images pane in ABC ROES.

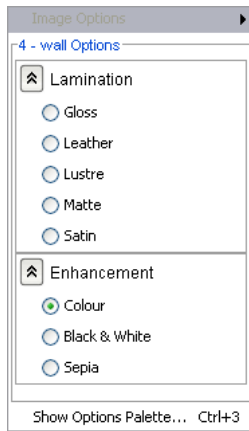
3. Select a product from the Prints palette and it will appear in the left pane. Click and drag an image from the image pane into the product.

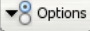


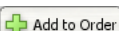
4. To crop the image within the product, adjust the Zoom slider. The blue lines indicate the cropping of the image within the product. Click and drag within the blue box to move the image. When the desired crop is achieved, click outside the blue box to see the final cropped image within the product.




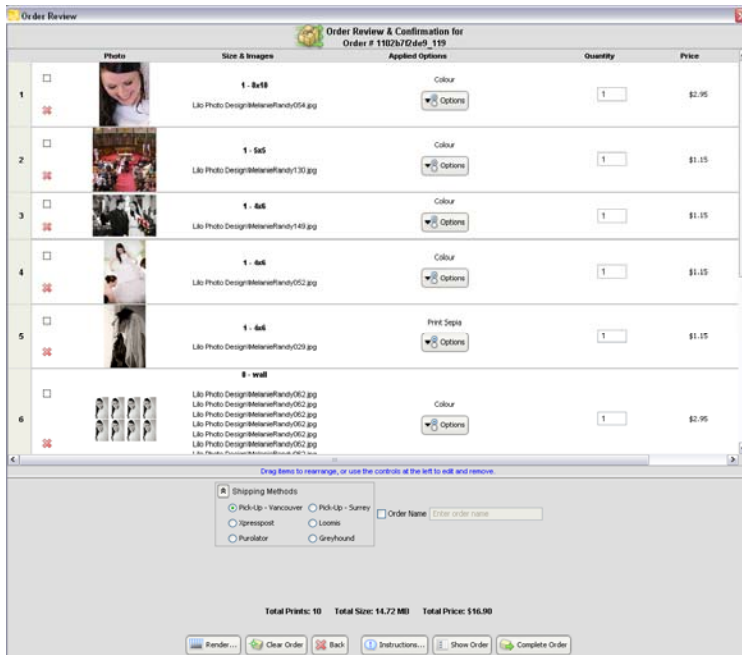
Note: To enlarge the view of the cropping area, Double Click within the blue box to enlarge. Double Clicking again will zoom out the view.




5.  Options Show Options Palette... Ctrl+3
Click Options(Ctrl+3) to bring up the available options for the product selected. Print options may include Mounting, Lamination, Canvas Transfer and Stretch and convert to Black and White or Sepia. Different options are available depending on the product selected.

6.  Add to Order
Click Add to Order to add the selected product with your cropped image to the order.

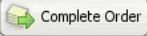
7.  Review Order
When order placement is complete, click review order.

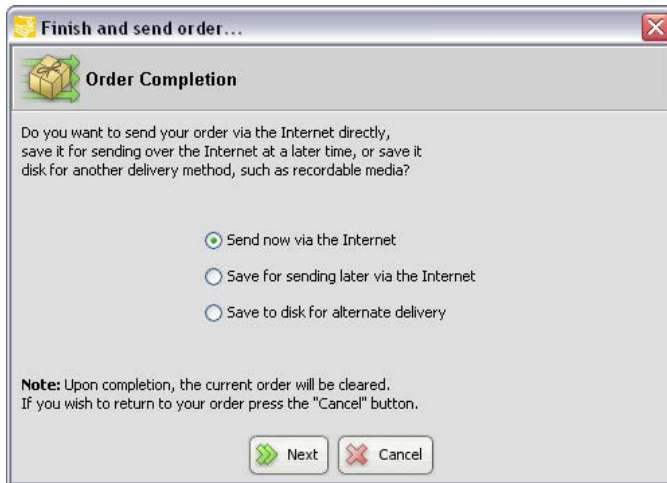


Select a Shipping Method.
Click Order Name to enter in the order name.

8.  Instructions...
Click Instructions... to enter any special instructions for the order.

9.  Show Order
Click Show Order to make a printout of the contents of the order.

10.  Click Complete Order to open the order submission window.



Choose the method of order delivery:

- Send now via the Internet - immediately uploads the order if an active internet connection is available
- Save for sending later via the Internet - saves the current order in the queued orders for uploading at a later time
- Save to disk for alternate deliver - if no active internet connection is available, order is saved to disk for output to CD or DVD



The Send now via the Internet will open the Queued Orders window indicating the upload progress of the order. When the order uploading is complete a "Sent! Thank you message" is displayed. Click Close to close the Queued Orders window.

When the order is processed at the lab, an email order summary will be sent with the lab reference order id used to identify your order and to track its progress within our lab. Please keep the email for your reference.